



BROADEN YOUR **DESIGN** HORIZONS

OPEN COLLABORATION

ArchiCAD 15 continues its track of innovations related to interdisciplinary collaboration.

ArchiCAD 15 continues the OPEN Design Collaboration track by refining the interdisciplinary collaboration workflow with improvements, for instance, to the detection of model changes and optimizing IFC performance. The continuous upgrades to our IFC interface help us maintain and grow our leadership in this field, which remains one of the most important differentiators for ArchiCAD.

GRAPHISOFT®
ARCHICAD 15

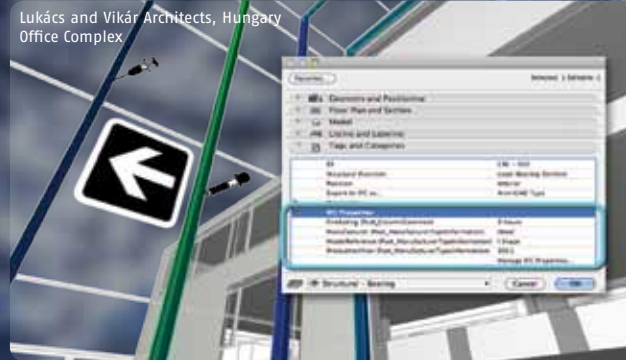
GRAPHISOFT ARCHICAD 15

OPEN COLLABORATION

+ IFC Properties as Native ArchiCAD Parameters

With ArchiCAD15, IFC Properties management becomes a natural part of the BIM workflow. New features, such as editing IFC properties in the Elements' Settings dialog, simplify IFC workflow by an order of magnitude. Transfer IFC properties among elements, views and projects just like any other native ArchiCAD parameters.

Lukács and Vikár Architects, Hungary
Office Complex



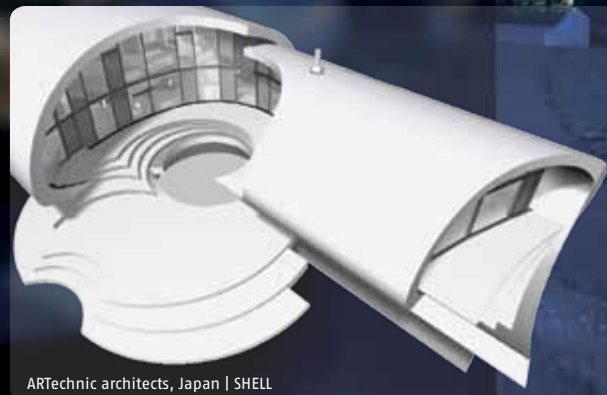
+ Improvements in Detect IFC Model Changes

Model change tracking is at the core of the OPEN design collaboration workflow. The Detect IFC Model Exchange workflow now allows you to choose and edit the preferred translator as you go. Better management of Model Changes entries in the Mark-Up Tool palette – with multi-select entries for deleting and zooming – offer a smooth, model-based coordination workflow.

+ Simplified Model Export

If your purpose in model exchange is to display model geometry – such as in a viewer or in an MEP program – now you can use the simplified BREP (boundary representation) geometry export option. The result: perfect geometric display of element intersections and Solid Operations, without including all element properties and data.

- + Customized IFC export of Library Part parameters
- + Effective IFC data handling in Teamwork
- + Story mapping
- + Improved IFC Manager
- + Faster IFC import/export
- + Full 64-bit support on MacOS
- + Renovation Workflow support



ARTechnic architects, Japan | SHELL

- + Shell tool with Complex Roofs
- + New parametric object libraries
- + Faster Autosave of projects
- + Many more ...

FOR MORE DETAILS, CONTACT ANY GRAPHISOFT OFFICE, OR VISIT: WWW.GRAPHISOFT.COM

Germany

GRAPHISOFT Deutschland GmbH.
Phone: +49 (89) 746 430
Fax: +49 (89) 746 43299
E-mail: mail@graphisoft.de
Web: www.graphisoft.de

United States

GRAPHISOFT North America, Inc.
Phone: +1 (617) 485 4203
Fax: +1 (617) 485 4201
E-mail: info@graphisoft.com
Web: www.graphisoft.com

United Kingdom

GRAPHISOFT UK Ltd.
Phone: +44 (1483) 263 150
Fax: +44 (1483) 263 151
E-mail: mail@graphisoft.co.uk
Web: www.graphisoft.com

Japan

GRAPHISOFT Japan KK.
Phone: +81 (3) 55 45 3800
Fax: +81 (3) 55 45 3804
E-mail: mail@graphisoft.co.jp
Web: www.graphisoft.co.jp

Russia

GRAPHISOFT Representative Office
Phone: +7 495 510 2503
E-mail: russia@graphisoft.com
Web: www.graphisoft.ru

Spain

GRAPHISOFT Spain, SL.
Phone: +34 (91) 535 8750
Fax: +34 (91) 535 8751
E-mail: mail@archicad.es
Web: www.archicad.es